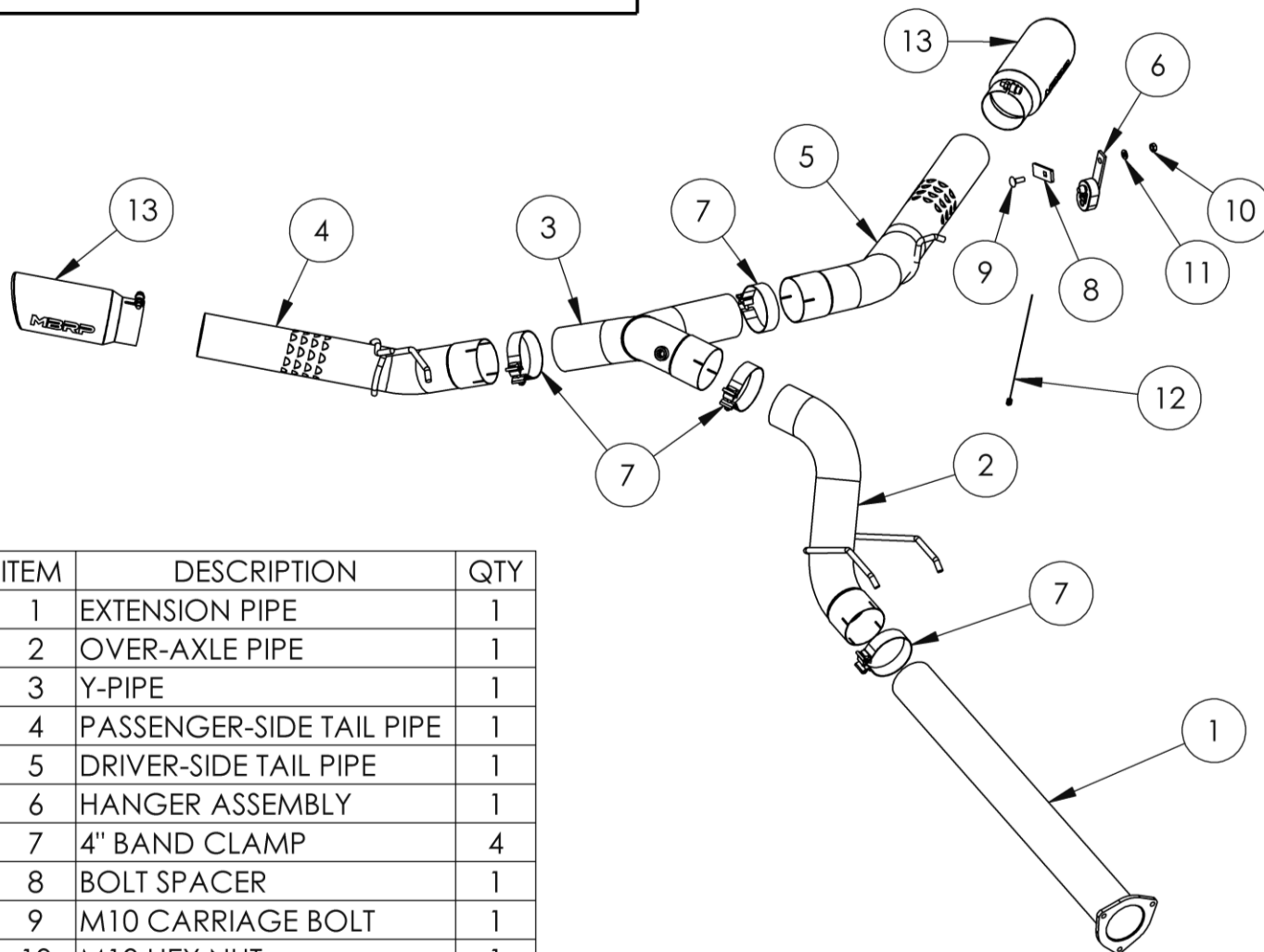


# S6291

2017-UP FORD F250/350/450, 6.7L,  
FILTER BACK, 4.0" DUAL SPLIT REAR

# MBRP®



ITEM	DESCRIPTION	QTY
1	EXTENSION PIPE	1
2	OVER-AXLE PIPE	1
3	Y-PIPE	1
4	PASSENGER-SIDE TAIL PIPE	1
5	DRIVER-SIDE TAIL PIPE	1
6	HANGER ASSEMBLY	1
7	4" BAND CLAMP	4
8	BOLT SPACER	1
9	M10 CARRIAGE BOLT	1
10	M10 HEX NUT	1
11	M10 FLAT WASHER	1
12	BOLT LEADER	1
13	EXHAUST TIP	2

## PLEASE READ BEFORE STARTING INSTALLATION

While MBRP has made every effort to ensure that all components of this system are of superior quality and properly packaged, it is the installer's responsibility to ensure the following before removal of the factory exhaust:

- that ALL components shown above are present.
- that ALL mating components fit together.
- that there are no damaged components.
- that the system you have purchased is appropriate for your vehicle year, model and configuration.
- that the system will not interfere with any modifications previously installed or planned.
- that you have read and understand these instructions.

If you have any questions or are uncertain about any aspect of the installation of this system to your vehicle please contact your dealer before commencing installation.

# MBRP

## Removal of Stock System:

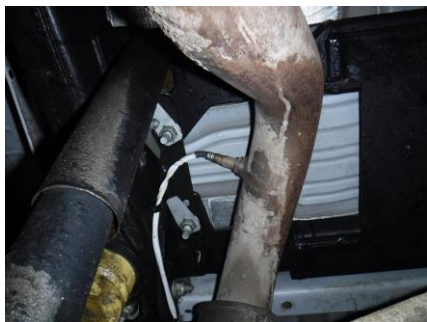


Figure 1

1. Apply a penetrating lubricant liberally to all exhaust fasteners, hangers and rubber isolators.

2. Remove the EGT from the factory tail pipe.  
**Refer to Figure 1.**

3. Remove the 3 nuts retaining the factory tail pipe.  
**Refer to Figure 2.**

4. Remove the two front rubber isolators with the tail pipe.  
**Refer to Figure 3.**

5. Remove the 3 nuts retaining the factory extension pipe assembly and remove the factory extension pipe. Keep the nuts and the gasket for the installation.



Figure 2

## Installation of MBRP Performance Exhaust:

**NOTE: Do not fully tighten any clamps until the entire system is properly aligned.**

1. Determine the **Extension Pipe** length required for your vehicle and cut to length.

**Refer to Figure 4 below.**



Figure 3

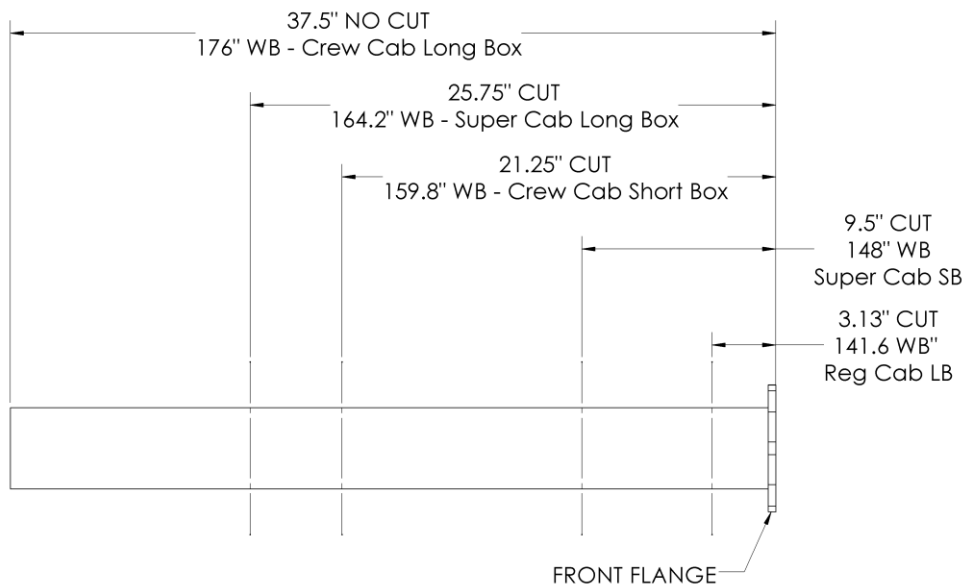


Figure 4



Figure 5

2. Loosely install the **Extension Pipe** onto the DPF using the original gasket and nuts.

**Refer to Figure 5.**

# MBRP



Figure 6

3. Replace the factory rubber isolators onto the truck in the original position. Using a **Clamp** install the **Over-Axle Pipe** onto the **Extension Pipe** and into the rubber isolators.  
**Refer to Figure 6.**



Figure 7

4. Place a **Clamp** onto the **Y- Pipe** inlet and install the **Y-Pipe** onto the **Over-Axle Pipe**.  
**Refer to Figure 7.**



Figure 8

5. Using a **Clamp** loosely install the **Passenger-Side Tail Pipe** onto the **Y-Pipe** and into the factory isolator.  
**Refer to Figure 8.**



Figure 9

6. Thread the **Bolt Leader** onto the **M10 Carriage Bolt**, and through the **Bolt Spacer**.  
**Refer to Figure 9.**



Figure 10

7. Place the **M10 Carriage Bolt** and **Bolt Spacer** into the oblong hole on the outside of the driver-side frame while holding onto the loose end of the **Bolt Leader**.  
**Refer to Figure 10.**

# MBRP



Figure 11

8. Pulling carefully on the **Bolt Leader** draw the **M10 Carriage Bolt** through the **Bolt Spacer** and through the hole in the frame. While holding the **M10 Carriage Bolt** in place, remove the **Bolt Leader** and install the **Hanger Assembly** using the supplied **M10 Nut** and **M10 Washer**. Refer to **Figure 11**.



Figure 12

9. Using a **Clamp** loosely install the **Driver-Side Tail Pipe** onto the **Y-Pipe** and into the **Hanger Assembly**. Refer to **Figure 12**.



Figure 13

10. Install the factory EGT sensor into the **Y-Pipe**. Refer to **Figure 13**.

11. Install the **Exhaust Tips** and adjust to your liking. Refer to **Figures 14 and 15**.

12. Once everything is aligned, completely tighten all **Clamps** and hardware starting from the front and working your way back.

13. Align the edge of each band clamp with the edge of the joint it is connecting. Tighten all hardware and clamps, starting at the front and working rearward to secure the system. Check along the full length of the exhaust system to ensure there is adequate clearance for fuel lines, vent lines, brake lines, frame, bodywork, suspension, and any wiring, etc. If there is any interference detected, relocate, or adjust to provide adequate clearance. Ensure all clamp connections are secure and components are unable to rotate or slide. Band clamps require approximately 45 lb-ft (60 N-m) of torque. Verify clearances, system security and band clamp torque after 30- 60 miles (50-100 km) of driving. **It is the installer's responsibility to ensure there is enough clearance to prevent damage.**

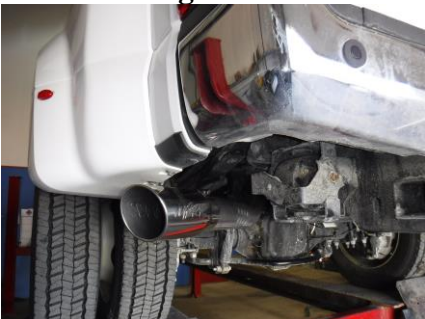


Figure 14



Figure 15



**Congratulations!** You are ready to begin experiencing the improved power, sound and driving experience of your **MBRP** performance exhaust system. We know you will enjoy your purchase.