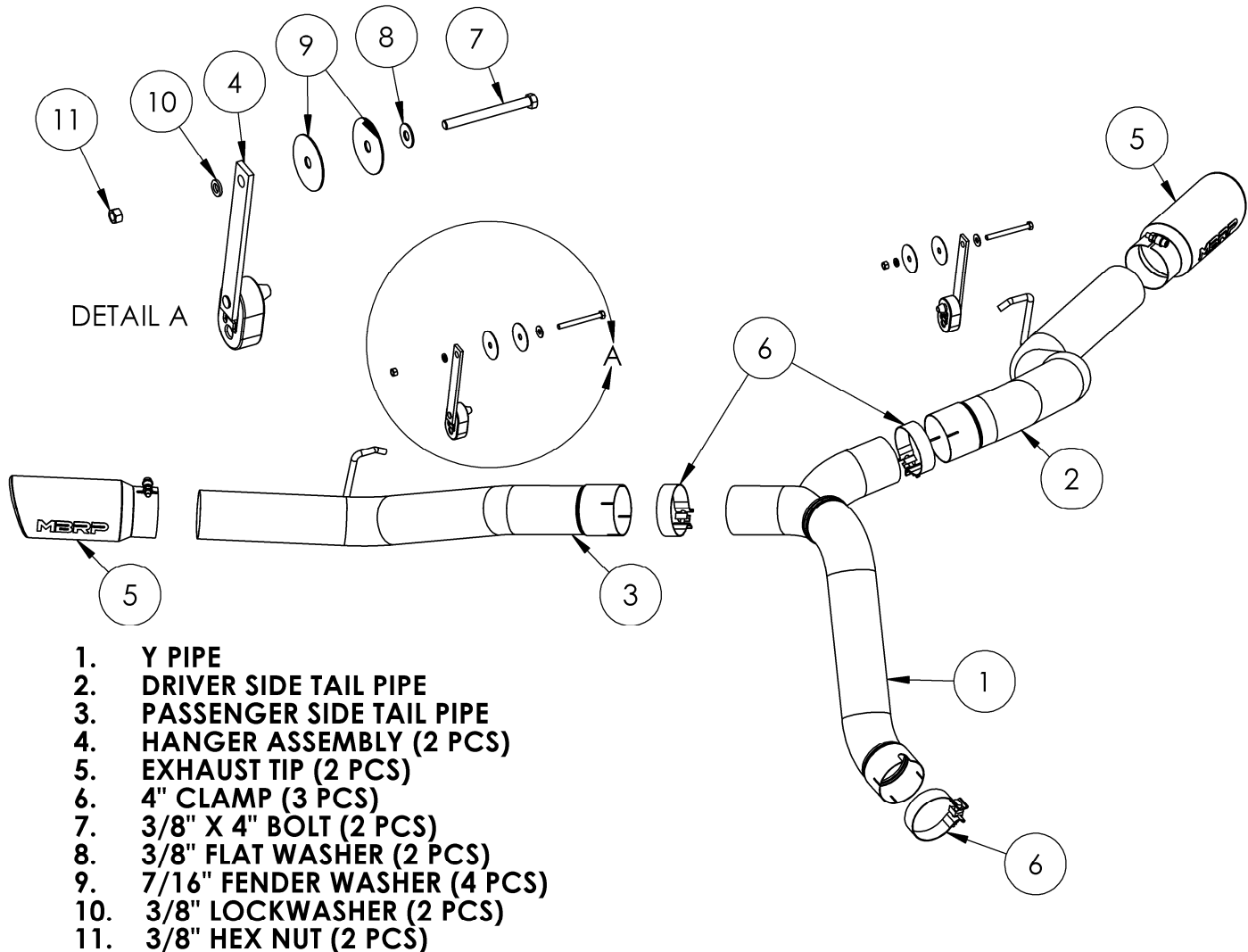


S6163

2014-18 RAM 2500 6.7L
CUMMINS, FILTER BACK, 4"
DUAL SIDE SPLIT - CREW CAB
SHORT BOX *COOL DUALS*®

MBRP®



NOTE: NOT RECOMMENDED FOR VEHICLES EQUIPPED WITH AIR SUSPENSION

PLEASE READ BEFORE STARTING INSTALLATION

While MBRP has made every effort to ensure that all components of this system are of superior quality and properly packaged, it is the installer's responsibility to ensure the following before removal of the factory exhaust:

- that ALL components shown above are present.
- that ALL mating components fit together.
- that there are no damaged components.
- that the system you have purchased is appropriate for your vehicle year, model and configuration.
- that the system will not interfere with any modifications previously installed or planned.
- that you have read and understand these instructions.

If you have any questions or are uncertain about any aspect of the installation of this system to your vehicle please contact your dealer before commencing installation.

MBRP®



Figure 1

Removal of Stock System:

1. Apply a penetrating lubricant liberally to all exhaust fasteners, hangers and rubber insulators.

2. Loosen the nut on the clamp on the factory tailpipe.

Refer to Figure 1.

3. Remove the tail pipe from the particulate filter then from the OEM rubber hanger. Remove the stock exhaust from the vehicle. Completely remove the factory rubber tail pipe hanger as it will not be reused.

4. Temporarily lower the spare tire.



Figure 2

Installation of MBRP Performance Exhaust:

1. Remove the 2 rear bolts retaining the spare tire heat shield.

Refer to Figure 2.

2. Install the **Hanger Assemblies**, centered in the frame holes, using the provided hardware, keeping the **7/16" Fender Washers** next to the frame. Do not completely tighten until all of the pipes are in place. This allows for final adjustment of the **Tail Pipes**.

Refer to Figures 2 (passenger side) and 3 (driver side).



Figure 3

3. Slide a **4" Clamp** onto the outlet end of the particulate filter. Install the **Y Pipe** as shown, taking care to align the tab on the filter with the slot in the **Y Pipe**.

Refer to Figure 4.



Figure 4

MBRP®



Figure 5

4. Slide one **4" Clamp** and the **Driver Side Tail Pipe** onto the left hand outlet of the **Y Pipe** keeping the brake flex hoses and ABS wiring in front of the pipe.

Refer to Figure 5.



Figure 6

5. Install the **Driver Side Tail Pipe** hanger into the **Hanger Assembly**.

Refer to Figure 6.



Figure 7

6. Install the **Passenger Side Tail Pipe** using a **4" Clamp** onto the right hand outlet of the **Y Pipe**.

Refer to Figure 7.



Figure 8

7. Install the **Passenger Side Tail Pipe** hanger into the **Hanger Assembly**.

Refer to Figure 8.

8. Align the exhaust and tighten the **Hanger Assembly** hardware on both sides.

MBRP®



Figure 9

9. Reinstall the spare tire heat shield and raise the spare tire keeping it as far to the right rear of the vehicle as possible.
Refer to Figure 9.

10. Align the exhaust as required. Starting at the front of the exhaust, tighten all clamps, hangers and connections.



Figure 10

11. Install the **Exhaust Tips**. Single rear wheel owners may wish to trim the length of the tail pipes to suit. The Tail Pipes are purposely left long for dual rear wheel applications.
Refer to Figure 10.

12. Check along the whole length of the exhaust system to ensure that there is adequate clearance around the spare tire, fuel and brake lines or any wiring. If any interference is detected relocate or adjust. Pay particular attention to the brake flex lines and ABS wiring on the driver's side. Most often these can be kept clear of the exhaust by loosely tying them back to the emergency brake cable. Different configurations may require different methods. **It is the installer's responsibility to ensure there is enough clearance to prevent damage.**



Congratulations! You are ready to begin experiencing the improved power, sound and driving experience of your **MBRP** performance exhaust system. We know you will enjoy your purchase.