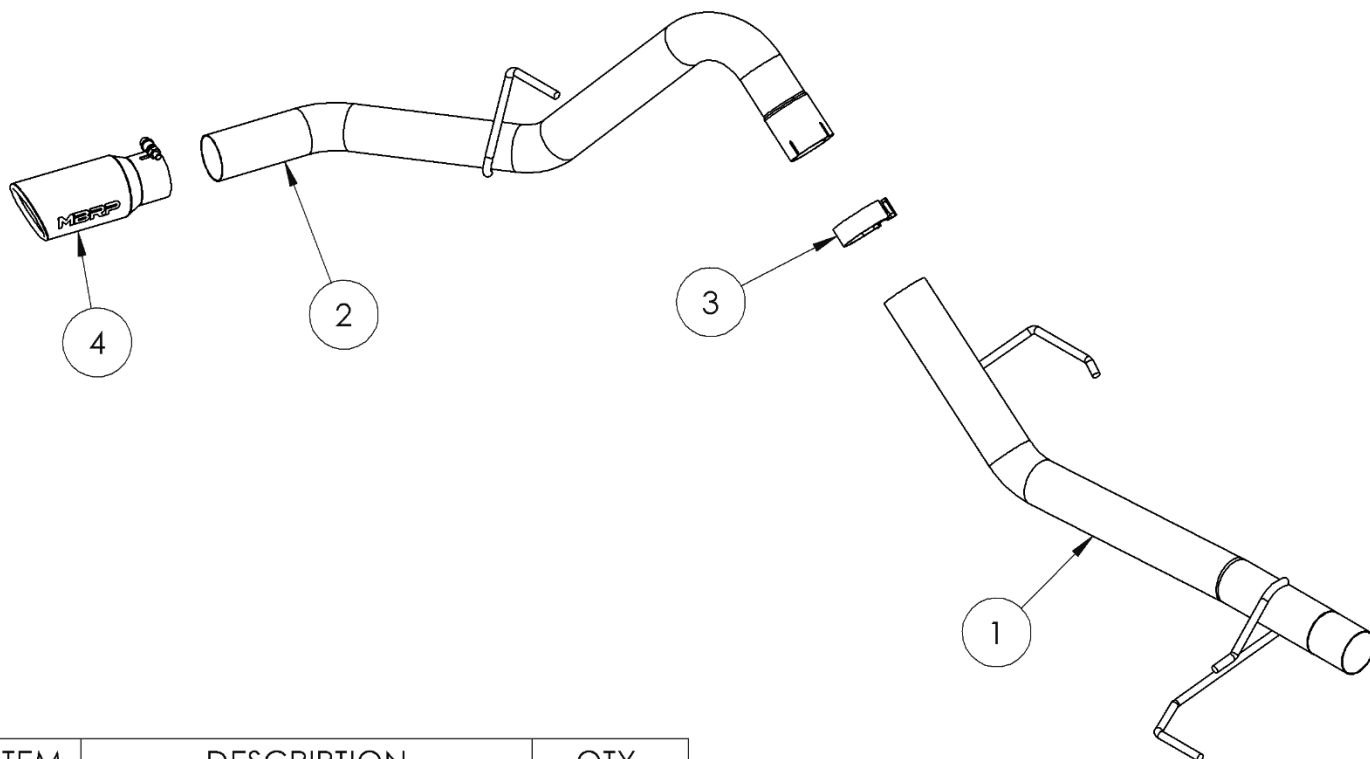


S5221

2021-UP FORD F150,
3.5L POWERBOOST HYBRID,
RESONATOR BACK, 3.0" SINGLE SIDE

MBRP®



ITEM	DESCRIPTION	QTY.
1	OVER-AXLE PIPE	1
2	TAIL PIPE	1
3	3.0" CLAMP	1
4	EXHAUST TIP	1

PLEASE READ BEFORE STARTING INSTALLATION

While MBRP has made every effort to ensure that all components of this system are of superior quality and properly packaged, it is the installer's responsibility to ensure the following before removal of the factory exhaust:

- that ALL components shown above are present.
- that ALL mating components fit together.
- that there are no damaged components.
- that the system you have purchased is appropriate for your vehicle year, model and configuration.
- that the system will not interfere with any modifications previously installed or planned.
- that you have read and understand these instructions.

If you have any questions or are uncertain about any aspect of the installation of this system to your vehicle please contact your dealer before commencing installation.

MBRP

Removal of Stock System

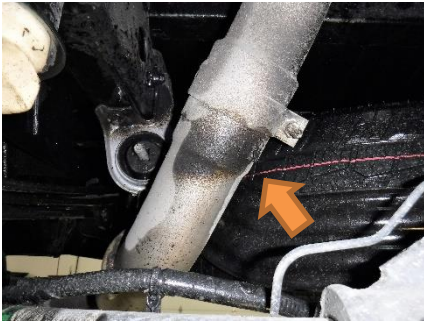


Figure 1

1. Apply penetrating lubricant liberally to all exhaust fasteners, hangers, and rubber insulators.
2. Loosen the tail pipe clamp and unbolt the tail pipe insulator from the frame. Pry the locking clip (arrow) open and remove the factory tail pipe. Refer to **Figure 1**.

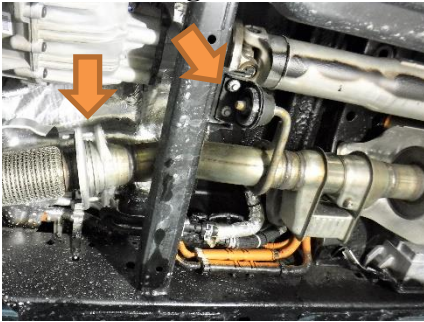


Figure 2

3. Loosen the factory clamp in front of the muffler.
4. To remove the factory muffler, the resonator / heat exchanger must be rotated to allow the muffler locking pin to slide out of the resonator. Remove the resonator insulator and loosen the front flange bolts to allow the resonator to rotate. Refer to **Figure 2**.

5. Support the resonator and remove the muffler from the vehicle.

Installation of MBRP Performance Exhaust



Figure 3

1. Remove the frame mounted rear muffler insulator and place it on the rear hanger of the **Over-Axle Pipe**. When reinstalling the insulator, ensure the hook end goes inside the frame. Refer to **Figures 3 and 4**.



Figure 4

2. Insert the **Over-Axle Pipe** into the factory resonator and factory muffler front insulator. Reinstall the frame mounted muffler rear insulator. Refer to **Figure 5**.

3. Place the previously removed tail pipe insulator onto the **Tail Pipe** hanger. Refer to **Figure 6**.



Figure 5

MBRP



Figure 6

4. Using a **3.0" Clamp**, loosely install the **Tail Pipe** onto the **Over-Axle Pipe** and reattach the tail pipe insulator to the frame. Refer to **Figure 7**.

5. Rotate the factory resonator / heat exchanger back to its original position and reinstall the resonator insulator. Ensure there is no interference with heat shield and coolant hoses or wiring. Refer to **Figure 8**.



Figure 7

6. Install the **Tip**, and adjust to your liking. Refer to **Figure 9**.

7. Carefully align the system and tip. Align the edge of each band clamp with the edge of the joint it is connecting. Tighten all hardware and clamps, starting at the front and working rearward to secure the system. Check along the full length of the exhaust system to ensure there is adequate clearance for fuel lines, vent lines, brake lines, frame, bodywork, suspension and any wiring, etc. If there is any interference detected, relocate or adjust to provide adequate clearance. Ensure all clamp connections are secure and components are unable to rotate or slide. Band clamps require approximately 45 lb-ft (60 N-m) of torque. Verify clearances, system security and band clamp torque after 30-60 miles (50-100 km) of driving.

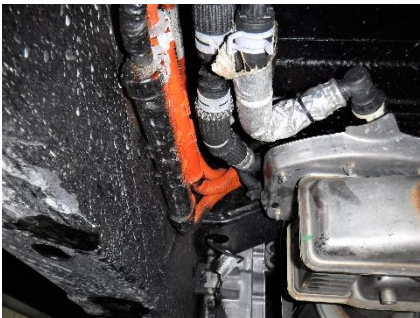


Figure 8



Figure 9



Congratulations! You are ready to begin experiencing the improved power, sound and driving experience of your **MBRP** Performance Exhaust. We know you will enjoy your purchase!