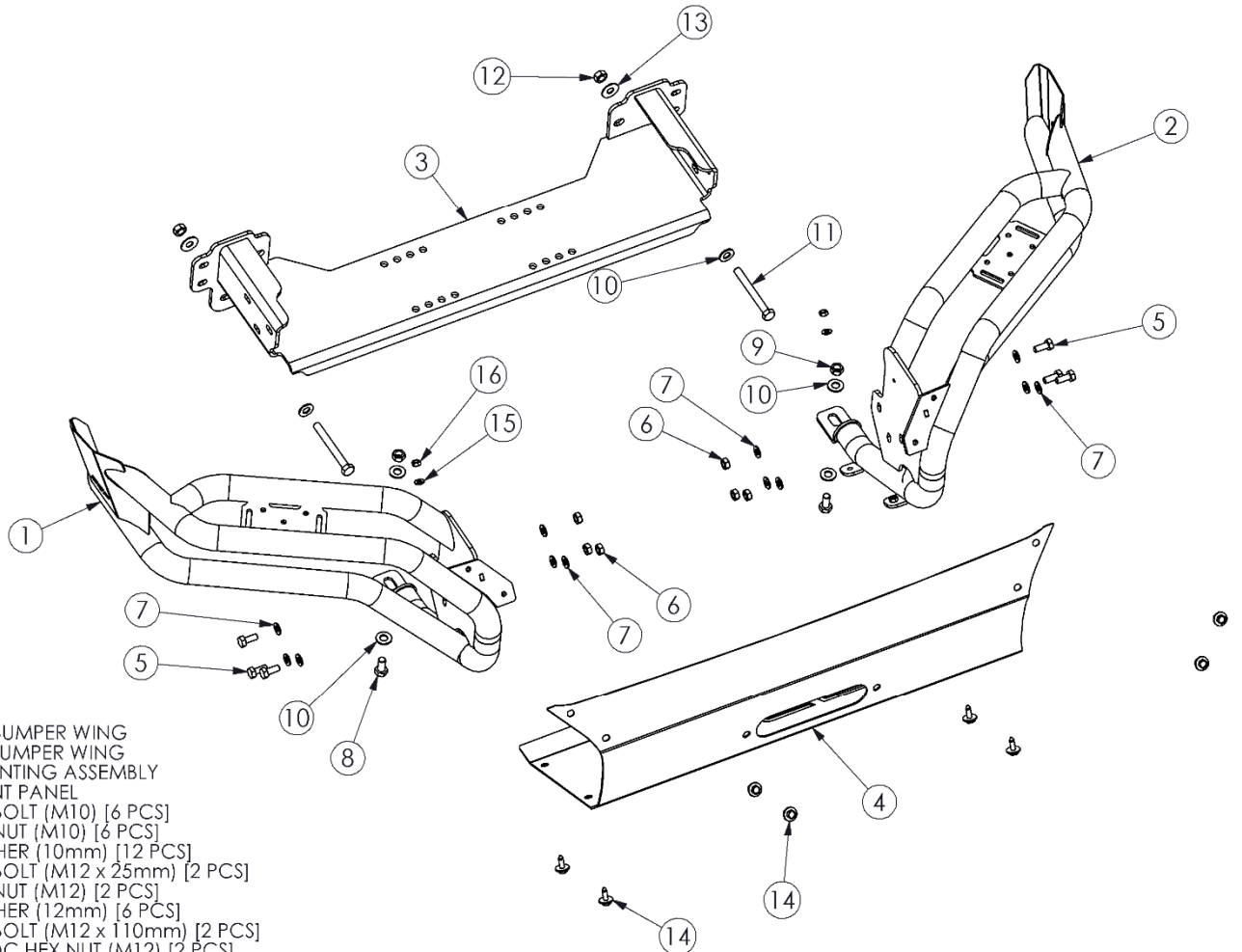


# 183099

FRONT BUMPER (WINCH)  
2016 AND UP TOYOTA TACOMA  
w FENDER FLARES

# OFF CAMBER FABRICATIONS

by: **MBRP** INC.



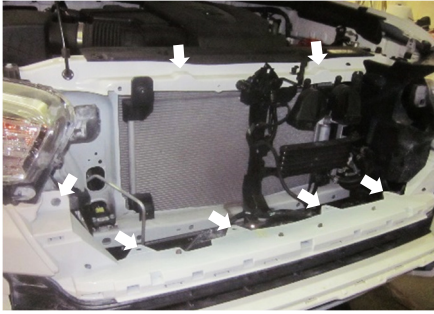
1. RHS BUMPER WING
2. LHS BUMPER WING
3. MOUNTING ASSEMBLY
4. FRONT PANEL
5. HEX BOLT (M10) [6 PCS]
6. HEX NUT (M10) [6 PCS]
7. WASHER (10mm) [12 PCS]
8. HEX BOLT (M12 x 25mm) [2 PCS]
9. HEX NUT (M12) [2 PCS]
10. WASHER (12mm) [6 PCS]
11. HEX BOLT (M12 x 110mm) [2 PCS]
12. NYLOC HEX NUT (M12) [2 PCS]
13. WASHER (12mm, LARGE O.D.) [2 PCS]
14. HEX SCREW WITH WASHER (M8) [8 PCS]
15. WASHER (8mm) [2 PCS]
16. HEX NUT (M8) [2 PCS]

## PLEASE READ BEFORE STARTING INSTALLATION

**While MBRP Inc. has made every effort to ensure that all components of this kit are of superior quality and properly packaged, it is the installer's responsibility to ensure the following before starting:**

- that ALL components shown above are present.
- that ALL mating components fit together.
- that there are no damaged components.
- that the kit you have purchased is appropriate for your vehicle year, model and configuration.
- that the kit will not interfere with any modifications previously installed or planned.
- that you have read and understand these instructions.

If you have any questions or are uncertain about any aspect of the installation of this kit to your vehicle please contact your dealer before commencing installation.



**Figure 1**



**Figure 2**



**Figure 3**



**Figure 4**



**Figure 5**

## REMOVAL OF STOCK BUMPER/FASCIA

1. Remove the front grill by removing the upper screws and the lower push-pin fasteners, then pulling the grill out to release the tabs.  
**Refer to Figure 1.**
  2. Remove the screws securing the lower fascia skirt, then remove the skirt.
  3. Remove the license plate bracket, and then the lower fascia centre panel by prying it out and releasing the retaining tabs.
  4. Remove the plastic bumper impact absorber.
  5. Remove the aluminum bumper bar through the centre of the front fascia by first removing the (6) 10mm flange nuts securing it to the bumper stand-off brackets, and then detaching one of the stand-off brackets from the frame by removing the (3) 10mm flange nuts securing it. **Refer to Figure 2.**
  6. Remove the (3) 10mm flange nuts securing the other bumper stand-off bracket and remove the bracket from the frame studs. Keep these nuts as they will be reused. **Refer to Figure 3.**
  7. Remove the fog light bezels.
  8. Remove the fog lights.
  9. Remove the mid-fascia grill insert by releasing the retaining tabs.  
**Refer to Figure 4.**
- The lower front fascia is now ready to be cut away. **Do not attempt to cut the fascia without the proper tools.** If necessary, take your truck to a body shop professional.
10. Starting on the right-hand side (RHS) of the vehicle, line up the included **cut template** with the edge of the fascia, the headlamp, the radius of the fog light recess, and the fender flare.  
**Refer to Figure 5.**
  11. Mark the indicated cut lines on the fascia and fender flare. Note the cut lines of the flare carefully in order to retain the inner attachments of the flare and fascia to the fender sheet metal.
  12. Cut away the material where the fog light was mounted (that was previously covered by the fog light bezel) and then cut along the marked template line from the fog light opening to the flare.  
**Refer to Figure 5.**

# OFF CAMBER FABRICATIONS

by: *MBRP* INC.

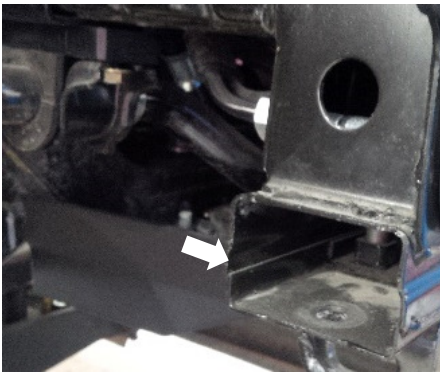


Figure 6



Figure 7



Figure 8

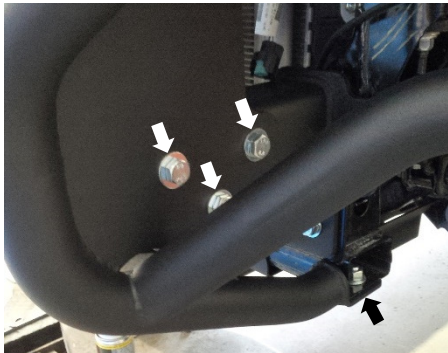


Figure 9

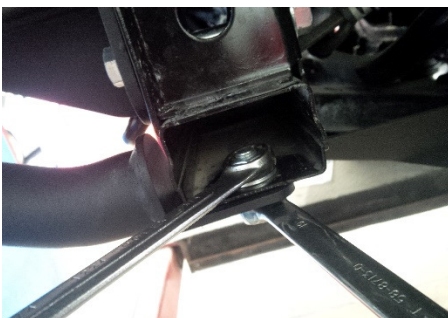


Figure 10

13. Temporarily support the free (cut) end of the fascia, and repeat Steps 10-12 for the left-hand side (LHS) of the vehicle to completely remove the lower fascia.
14. Trim the inner wheel liner to match the new height of the fender flare.
15. Zip-tie the fog light wire leads out of the way.
16. Remove the steel rectangular blocks from the ends of the front lower crossbar by removing the 12mm flange bolts. **Refer to Figure 6.**

## INSTALLATION OF OCF BUMPER

1. Install the **Mounting Assembly** onto the vehicle studs using the stock 10mm flange nuts previously removed. Centre the assembly on the frame and tighten the nuts. **Refer to Figure 7.**
2. Install the **M12 X 110mm Hex Bolt** bolts through the lower bracket holes and frame section using a **12mm Washer** and the **M12 Nyloc Nut** with a **Large OD 12mm Washer**. **Refer to Figure 8.**
3. Replace the stock front grill using the stock fasteners removed previously.
4. Install the **LHS Wing Assembly** onto the side of the **Mounting Assembly** using the **M10 Hex Bolts, 10mm Washers, and 10mm Nuts** in the three (3) mounting slots of the side plates. Do not tighten the hardware yet.
5. Install one of the **M12 X 25mm Hex Bolts** into the mounting hole on the bottom bracket of the **LHS Wing Assembly** and the hole at the end of the crossbar using two (2) **12mm Washers** and a **12mm Nut**. **Refer to Figure 9.** Finger tighten.
6. Position the **LHS Wing Assembly** such that the winglet profile is centred and aligned with the profile of the fender flare. There should be an even space between the winglet and the flare, and at least 1/4" between the inner flare and the back recess of the winglet. Tighten the **M10 Hex Bolts**, followed by the **M12 Hex Bolt**. **Refer to Figures 10 and 11.**
7. Repeat Steps 4-6 for the **RHS Wing Assembly**.

# OFF CAMBER FABRICATIONS

by: *MBRP* INC.



Figure 11



Figure 12

8. Compare the gap between the winglet and the fender flare on both the left and right side. If necessary, loosen the M10 flange nuts on the vehicle studs, the **M12 X 110mm Hex Bolts**, and the **M12 X 25mm Hex Bolts** and shift the bumper assembly left or right to even the gaps. Retighten the Hardware. **Refer to Figure 11.**

Note: To further even out the winglet gaps, the fender flares can be adjusted in or out by loosening the hex screw in the wheel well, and then retightening.

9. At this point a winch can be mounted to the **Mounting Assembly**. Measure the hole pattern and vehicle clearances to select a suitably-sized winch. \*Note that some winches may require relocation of their control unit to fit properly.
10. Install the front cover panel using the eight (8) black **M8 Hex Screws**. Do not fully tighten the fasteners until all eight have been threaded in. Use the supplied **M8 Washers** and **M8 Nuts** for the bottom tab attachment. **Refer to Figure 12.**



Congratulations! You're finished! We are sure that you will enjoy this **Off Camber Fabrications** product by *MBRP Inc.*