

7929 Lincoln Ave. Riverside, CA 92504  
Phone: 951.689.ICON | Fax: 951.689.1016

PART #	DESCRIPTION
214214	19-UP RAM 2500 FRONT ADJUSTABLE TRACK BAR KIT

### COMPONENTS INCLUDED

(1) 214421 19+ RAM HD FRONT ADJ TRACK BAR

### HARDWARE INCLUDED

(2) 217207 HEIM SPACER COM16 X 18MM X 1.600  
(1) 217208 HEIM SPACER JMX14 X 18MM X 1.350  
(1) 217218 HEIM SPACER JMX14 X 18MM X 1.850  
(1) 217520 L-R ADJ SLEEVE 1 1/8-12L / 7/8-14  
(1) 295501 COM16T BEARING F1 FIT  
(1) 295529 JMX14T-772 SP 7/8-14, 4.25 OAL, 2.75 THD

(2) 605145 3/8-16 X 1.000 12PT  
(1) 605330 1/2 WASHER  
(1) 605823 M12-1.75 LOCK NUT  
(1) 605835 M12X1.75 X 70 BUTTON HEAD  
(2) 605839 M10-1.5 X 20MM BHCS

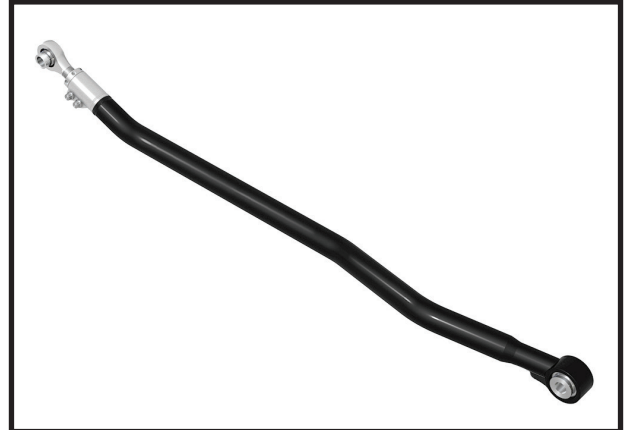
### TOOLS REQUIRED

TORQUE WRENCH  
6MM ALLEN WRENCH  
8MM ALLEN WRENCH  
27MM SOCKET / WRENCH

36MM SOCKET / WRENCH  
42MM WRENCH 3/8" 12 POINT SOCKET / WRENCH  
3/4" SOCKET / WRENCH

### TECH NOTES

1. TRACK BAR IS DESIGNED TO BE ADJUSTED ON THE VEHICLE VIA THE THREADED ADJUSTER HOLES. ADJUSTING IT OFF THE VEHICLE BY TURNING ONLY THE ROD END OR ONLY THE ADJUSTER CAN LEAD TO INCORRECT THREAD ENGAGEMENT AND FAILURE. ALWAYS ADJUST USING THE ADJUSTER WITH THE ROD END FIXED. MAXIMUM ADJUSTED LENGTH IS 39.40"
2. SOLID MOUNTED ENDS INCREASE STEERING RESPONSE AND IMPROVE VEHICLE FEEDBACK BUT CAN GENERATE INCREASED ROAD NOISE.
3. TRACK BAR SHOULD BE ADJUSTED ROUGHLY 1/16" LONGER FOR EACH INCH OF LIFT ASSUMING FACTORY TRACK BAR MOUNTING LOCATION. FINAL NUMBER DETERMINED BY PROFESSIONAL ALIGNMENT.
4. ICON DOES NOT RECOMMEND INSTALLING THIS BAR ON NON ICON SUSPENSION SYSTEMS. OTHER MANUFACTURER'S LIFT KITS ABOVE 2.5" LIFT MAY REQUIRE RADIUS ARM DROP BRACKETS OR A TRACK BAR DROP BRACKET. USING ANOTHER MANUFACTURER'S LIFT KIT MAY BIND THE TRACK BAR OR REQUIRE ADJUSTMENTS BEYOND THE SPECIFIED LIMITS.
5. OUT OF SPEC CASTER CAN CAUSE RUBBING AND DAMAGE TO VEHICLE COMPONENTS.
6. DO NOT EXCEED 2.375" OF ADJUSTMENT FROM THE CENTER OF THE ROD END TO THE EDGE OF THE TRACK BAR PINCH HOUSING. FAILURE CAUSED BY EXCESSIVE ADJUSTMENT WILL NOT BE COVERED UNDER ICON'S WARRANTY POLICY. REFER TO TECH NOTE PHOTO #6.



### WARNING!

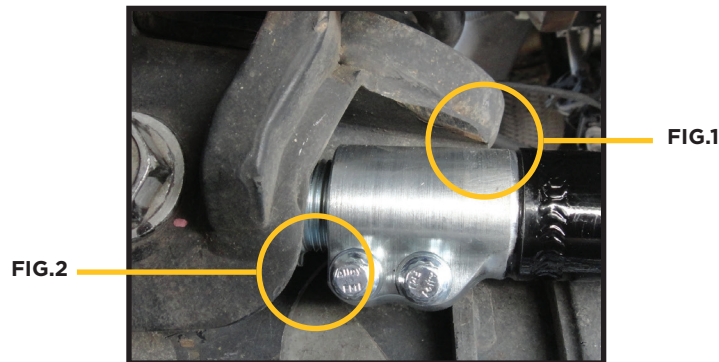
\*\* READ ALL INSTRUCTIONS THOROUGHLY FROM START TO FINISH BEFORE BEGINNING INSTALLATION! IF THESE INSTRUCTIONS ARE NOT PROPERLY FOLLOWED SEVERE FRAME, SUSPENSION AND TIRE DAMAGE MAY RESULT TO THE VEHICLE!

\*\* ICON VEHICLE DYNAMICS RECOMMENDS THAT YOU EXERCISE EXTREME CAUTION WHEN WORKING UNDER A VEHICLE THAT IS SUPPORTED WITH JACK STANDS.

\*\* ICON VEHICLE DYNAMICS RECOMMENDS ALL INSTALLATION TO BE PERFORMED BY A PROFESSIONAL SHOP/SERVICE TECHNICIAN. PRODUCT FAILURE CAUSED BY IMPROPER INSTALLATION WILL NOT BE COVERED UNDER ICON'S WARRANTY POLICY.

## INSTALLATION

1. With the vehicle in park and on a level surface remove the factory track bar from the frame and axle using a 27mm.
2. If installing this on an application with increased droop over stock, the passenger side coil seat must be sanded where the adjuster will contact it. ICON recommends cycling the suspension to full droop with shocks installed and sanding until there is no interference. [FIGURE 1]

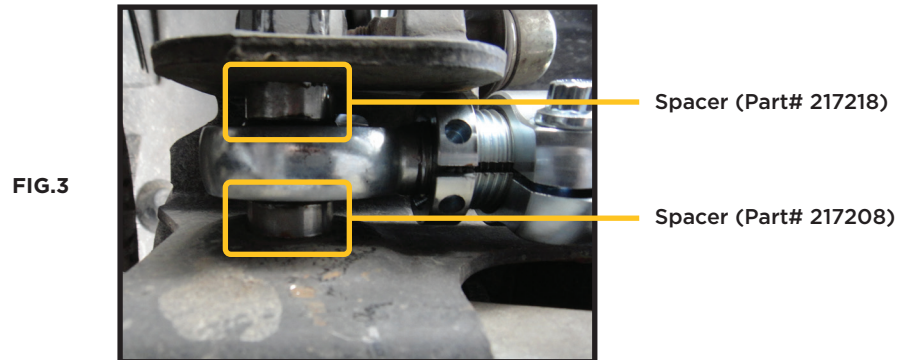


3. If installing on a vehicle that requires the track bar to be at minimum length, sanding for pinch bolt clearance may be required. [FIGURE 2]
4. The ICON track bar comes preassembled from ICON with the parts listed above. The factory track bar length removed in Step 1 from center to center is 38.84".
5. Lay the ICON track bar assembly over the stock track bar and turn the adjuster while holding the rod end fixed until the eye to eye dimensions are close to factory.

**6.** Install the rod end side into the axle mounting pocket using the 2 spacers (217208, 217218) and the factory hardware (the spacers push the track bar rearward in the frame pocket). Using a 27mm, thread the bolt into the factory nut tab. [Torque to factory spec.]

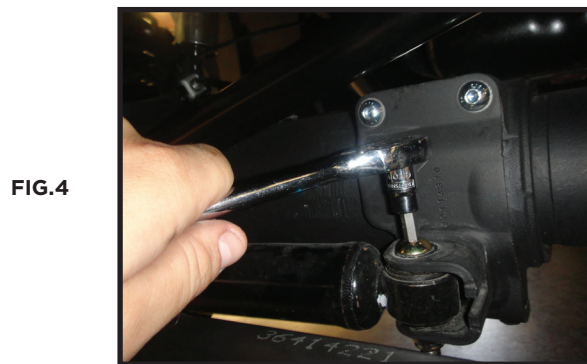
**7.** Install the uniball side in the frame mounting tabs using the 2 spacers (Part #217207) and factory hardware. [Torque to factory spec.]

**8.** Verify axle is centered/adjust as needed. Once aligned, apply BLUE thread locker to the pinch bolts in the track bar housing. Tighten the pinch bolts in an opposing pattern at least 3 times. [Torque to 45 ft-lbs] [FIGURE 3]



**9.** Center the steering wheel if needed by adjusting the drag link adjuster with a 36mm and 42mm. [Torque to factory spec.]

**10.** If you do not have a bump stop spacer that limits up-travel, replacing the factory stabilizer bolt with the supplied 12mm button head screw is required to keep the track bar from hitting it at full compression. If the factory bump stops failed the track bar can come into contact with the factory bolt. The washer is for the bottom side with the lock nut. [Torque to 50 ft-lbs] [FIGURE 4]



**11.** If you have low caster, ICON recommends replacing the (2) axle bolts with the supplied (605839) button head bolts for added clearance using a 6mm allen wrench. Vehicles with adequate caster do not have clearance issues. [FIGURE 5 & 6]

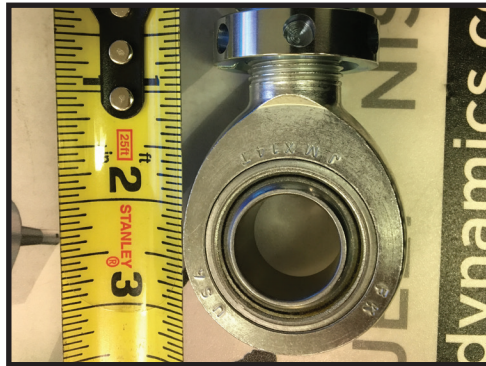


**12.** Have the vehicle professionally aligned.

**VERIFY ALL FASTENERS ARE PROPERLY TORQUED BEFORE DRIVING VEHICLE.**

**RETORQUE ALL NUTS, BOLTS AND LUGS AFTER 100 MILES AND PERIODICALLY THEREAFTER.**

[TECH NOTE #6]



### ICON VEHICLE DYNAMICS LIMITED LIFETIME WARRANTY

ICON Vehicle Dynamics warrants to the original retail purchaser who owns the vehicle on which the product was originally installed. ICON Vehicle Dynamics does not warrant the product for finish, alterations, modifications and/or installation contrary to ICON Vehicle Dynamics instructions. ICON Vehicle Dynamics products are not designed, nor are they intended to be installed on vehicles used in race applications, for racing purposes or for similar activities. (A "race" is defined as any contest between two or more vehicles, or a contest of one or more vehicles against the clock, whether or not such contest is for a prize). This warranty does not include coverage for police or taxi vehicles, race vehicles, or vehicles used for government or commercial purposes. Also excluded from this warranty are sales outside of the United States of America and Canada.

ICON Vehicle Dynamics' obligation under this warranty is limited to the repair or replacement, at ICON Vehicle Dynamics' discretion, of the defective product. Any and all costs of removal, installation or re-installation, freight charges and incidental or consequential damages are expressly excluded from this warranty. Items that are subject to wear are not considered defective when worn and are not covered.

ICON Vehicle Dynamics components must be installed as a complete kit as shown in our current application guide. Any substitutions or exemptions of required components will immediately void the warranty. Some finish damage may happen to parts during shipping and is not covered under warranty.

This warranty is expressly in lieu of all other warranties expressed or implied. This warranty shall not apply to any product that has been improperly installed, modified or customized subject to accident, negligence, abuse or misuse.



**ICON VEHICLE DYNAMICS®**  
PERFORMANCE SUSPENSION SYSTEMS AND SHOCK ABSORBERS

7929 Lincoln Ave. Riverside, CA 92504 Phone: 951.689.ICON Fax: 951.689.1016  
[www.iconvehicledynamics.com](http://www.iconvehicledynamics.com)



**FOLLOW US ON FACEBOOK!**

