

2017-UP FSD ACC RELOCATION KIT

DOCUMENT: INST_66202_REVA • UPDATED: FEB 2023

Thank you for purchasing this ICON Vehicle Dynamics product. Please read through this entire document before proceeding with installation. If you are not confident in your mechanical skills, please seek the help of a professional to perform the installation. Check your packages immediately upon arrival to ensure that everything listed is included, and to check for damage during shipping. If anything is missing or damaged, or if you need technical assistance with any aspect of this installation, call (951) 689-ICON as soon as possible.



APPLICATION

These installation instructions apply to the following products:

66202 2017-UP FSD ACC RELOCATION KIT

COMPONENTS INCLUDED

- (1) 17-UP FSD ACC MAIN BRACKET
- (1) 17-UP FSD TOP SWIVEL BRACKET
- (1) 17-UP FSD ADAPTOR PLATE
- (1) 17-UP FSD ACC ADAPTOR PLATE SPACER
- (1) M8 TEMPLATE WASHER

HARDWARE INCLUDED

- (1) ALLEN WRENCH
- (2) M6-1.00 X 20MM HHCS 18-8 SS
- (1) M6-1.00 X 25MM SQCB 18-8 SS
- (5) M6 FLAT WASHER 18-8 SS
- (3) M6-1.00 NYLOCK NUT 18-8 SS
- (6) M8-1.25 X 25MM BHCS 18-8 SS
- (1) M8-1.25 X 25MM HHCS 18-8 SS
- (2) M8-1.25 X 30MM HHCS 18-8 SS
- (2) M8-1.25 X 60MM HHCS 18-8 SS
- (9) M8 X 16MM OD FLAT WASHER 18-8 SS
- (6) M8 X 22MM OD FLAT WASHER 18-8 SS
- (4) M8 X 28MM OD FLAT WASHER 18-8 SS
- (10) M8-1.25 NYLOCK NUT 18-8 SS

TOOLS REQUIRED

- Flat head screwdriver
- Ratchet & extensions
- Body panel clip removal tool
- Power Drill or hand drill, whatever floats your boat
- 3/4" socket/wrench
- E6 external Torx socket
- 3/8" drill bit

TECH NOTES

NOTE: These installation instructions are based on a clean installation on to a stock vehicle. Previously modified vehicles may require additional steps.

NOTE: Installation for 2017-up FSD only.

NOTE: This product is compatible with multiple vehicles, additional unused hardware is used in a different application. Read through the entire installation instructions to ensure the vehicle components match your make and model.

NOTE: Cutting and drilling required

NOTE: Install time: 1-2 hours

IMPORTANT NOTICES - PLEASE READ FIRST

- ✓ **READ ALL INSTRUCTIONS THOROUGHLY FROM START TO FINISH BEFORE BEGINNING INSTALLATION! IF THESE INSTRUCTIONS ARE NOT PROPERLY FOLLOWED SEVERE FRAME, SUSPENSION OR TIRE DAMAGE MAY RESULT TO THE VEHICLE!**
- ✓ **ICON VEHICLE DYNAMICS RECOMMENDS ALL INSTALLATION TO BE PERFORMED BY A PROFESSIONAL SHOP/SERVICE TECHNICIAN. PRODUCT FAILURE CAUSED BY IMPROPER INSTALLATION WILL NOT BE COVERED UNDER ICON'S WARRANTY POLICY.**

INSTALLATION INSTRUCTIONS

1. Ensure the vehicle is placed on a flat, level surface with the transmission in PARK (or first gear for vehicles equipped with a manual transmission), the tires chocked, and the emergency brake ON. Wear safety glasses from this point forward.
2. If you are installing this kit in conjunction with the ICON 66200 2017-UP SUPER DUTY FRONT BUMPER, skip to Step 10.
3. Open hood and disconnect the negative battery terminal.
4. Starting from the driver underside of the front bumper, unplug the fog light harness connector that is located along the inside frame rail.



FIG. 1



FIG. 4



FIG. 5

- 5. From the wheel well towards the front of the truck, using a 15mm socket remove the two (2) bolts securing the bumper to the side supports. Repeat this on the opposite side of the vehicle.



FIG. 2

- 6. Remove the plastic cover that sits around the two hooks (no tools required) to reveal the four (4) factory bumper mount bolts.



FIG. 3

- 7. 2017-2019 models with the Adaptive Cruise Control (ACC) feature, use a 10mm socket and wrench to remove the two (2) bolts that hold the plastic housing for the ACC unit. Use a 10mm socket to remove the three (3) bolts that are holding the ACC unit in place, disconnect and set aside.

- 8. 2020-Up models with the Adaptive Cruise Control (ACC) feature, use a 11mm socket to remove the three (3) hex nuts that hold the ACC unit in place. Use a E6 External Torx socket to remove the three (3) ACC bracket mounting studs, disconnect and set aside.

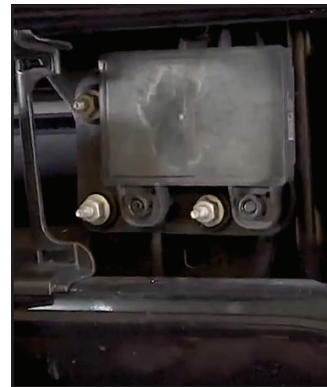


FIG. 6



FIG. 7

- 9. Using a 18mm socket, remove the four (4) factory bumper mount bolts holding the bumper in place. At this point, with the help of a friend to prevent any damage to the vehicle, carefully remove the front bumper from the tow hook brackets and place on a clean surface. Note: Vehicles equipped a with Block Heater, ensure that you remove clip that holds the cord from the backside of the bumper.



FIG. 8



FIG. 9



- 10. To remove the ACC/Fog light harness from the bumper, start by using an 8mm socket to remove the six (6) bolts that are holding the center plastic shroud of the back of the bumper.



FIG. 10

- 11. Use a flat head screwdriver to remove the fog light connector from the fog light housing, do this on both sides of the bumper. Set the wire harness aside at this point.



FIG. 11



FIG. 12

- 12. To remove the front grill, start by using a pry tool or a flat head screwdriver to remove the twelve (12) clips that are holding the air deflector cover.



FIG. 13



FIG. 14

- 13. Using a 10mm socket, remove the eight (8) bolts holding the top of the grill in place. At this point, starting from either side of the grill begin to

pry the grill from the front fascia of the vehicle (no tools required for this). Careful not to drop the grill, there is a front camera and water line attached behind the grill. For best results, have a friend hold and support the grill.

A. To remove the water line, use a flat head screwdriver to release the plastic clip holding the rubber hose to the nozzle. Any water in line may leak out, no need to crimp line just move line to the top of the radiator.

B. To remove the front camera line, use a flat head screwdriver from underneath the connector plug to release it from the front camera. At this point with the help of a friend to prevent any damage to vehicle or grill, carefully remove the grill from the vehicle and place on a clean surface.



FIG. 15

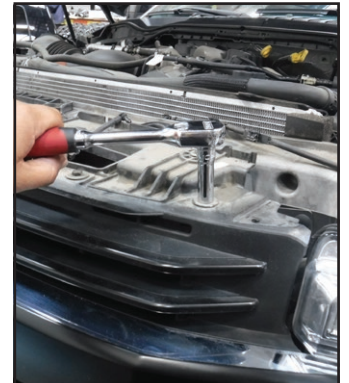


FIG. 16



FIG. 17



FIG. 18

- 14. ACC/Fog light wire harness connection needs to be rerouted, please reference Step 4: FIG. 1 for connection location.
- 15. Using a pry tool or a flat head screwdriver, loosen the wire harness by following and removing the series of clips along the side and up the back of the frame.



FIG. 19

- 16. Once the wire harness is released, pass through and route the wire harness up the engine bay to the left side of the power steering reservoir.



FIG. 20

- 17. Connect the wire harness from Step 13 to the rerouted ACC/Fog light wire harness connection and pass through the bottom of the radiator hose. Set the loose connections on top of the radiator at this point.



FIG. 21

- 18. To mount the ACC relocation bracket to the radiator core support, use the ACC TOP SWIVEL BKT as a template, by flipping it over and using the rounded end of the bracket, line up with the center grooves between the two mounting holes closest

to the center of the vehicle. Use a paint pen or permanent marker to place a mark on the plastic.



FIG. 22



FIG. 23

- 19. Using a power drill and a 3/8" Dill bit, drill a through hole from the top of the radiator core support. At this point, use one (1) M8-1.25 X 60MM Hex Head Bolt to ensure that the hole is straight.
- 20. Position the ACC TOP SWIVEL BKT underneath the radiator core to be parallel to the grill and line up with the drilled hole and the radiator core support (M8-1.25 X 60MM Hex Head Bolt can be used to line up the bracket). Use a paint pen or permanent marker to place a mark on the plastic through the center hole on the ACC TOP SWIVEL BKT. Note: Only the left and center holes are used on this application. Drill a 3/8" hole.



FIG. 24

- 21. At this point, use two (2) M8-1.25 X 60MM Hex Head Bolt to ensure that the holes and the ACC TOP SWIVEL BKT are straight and the bracket parallel with the grill. Remove hardware and bracket once alignment is verified.

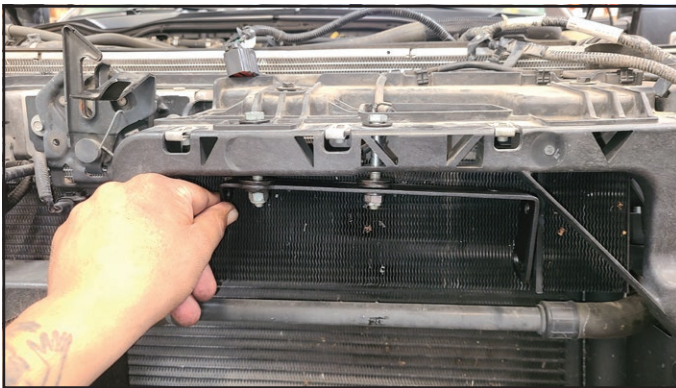


FIG. 25

- 22. To assemble the ACC Relocation bracket, locate the ACC MAIN BKT and ACC TOP SWIVEL BKT. Using a 10mm wrench and socket, use the supplied two (2) M6-1.00 X 20MM Hex Head Bolt, four (4) M6 Flat Washers, and two (2) M6-1.00 Nylock Nuts through the top side round holes on both sides of the brackets. Note that the ACC TOP SWIVEL BKT should be on the outside of the ACC MAIN BKT and the hex head should be on the outside of the brackets, tighten the hardware to give it enough play to adjust the ACC MAIN BKT.
- 23. Using a 10mm wrench or socket, use the supplied one (1) M6-1.00 X 25MM Square Neck Bolt, one (1) M6 Flat Washer, and one (1) M6-1.00 Nylock Nut through the bottom side square and round holes on both sides of the brackets. Square Neck should be inserted through the inside on the bracket, tighten the hardware to give it enough play to adjust the ACC MAIN BKT.

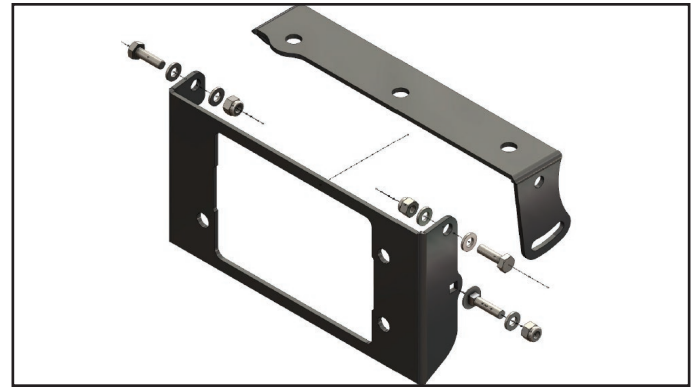


FIG. 26

- 24. 2017-2019 models, place ACC module through the back of the ACC MAIN BKT. Using a 13mm socket and supplied Allen Wrench, use the supplied three (3) M8-1.25 X 25MM Button Head Bolts, three (3) M8 X 16MM OD Flat Washer, and three (3) M8-1.25 Nylock Nut.

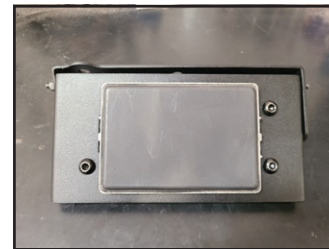


FIG. 27



FIG. 28

- 25. 2020-Up models, locate the ACC ADAPTOR PLATE using a 13mm socket and supplied Allen Wrench, use the supplied three (3) M8-1.25 X 25MM Button Head Bolts, three (3) M8 X 16MM OD Flat Washer, and three (3) M8-1.25 Nylock Nut to secure the ACC ADAPTOR PLATE to the ACC MAIN BKT.
- 26. Using a 13mm socket and supplied Allen Wrench, place the ACC module in front of the ACC ADAPTOR PLATE, use the supplied three (3) M8-1.25 X 25MM Button Head Bolts, three (3) M8 X 16MM OD Flat Washer, and three (3) M8-1.25 Nylock Nut to secure the module to the front face of the ACC ADAPTOR PLATE and ACC ADAPTOR SPACER to the back of the ACC MAIN BKT.

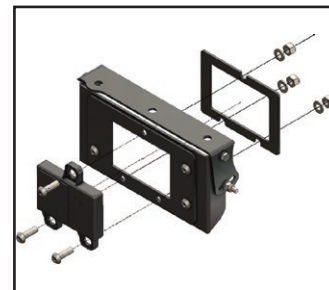


FIG. 29



FIG. 30

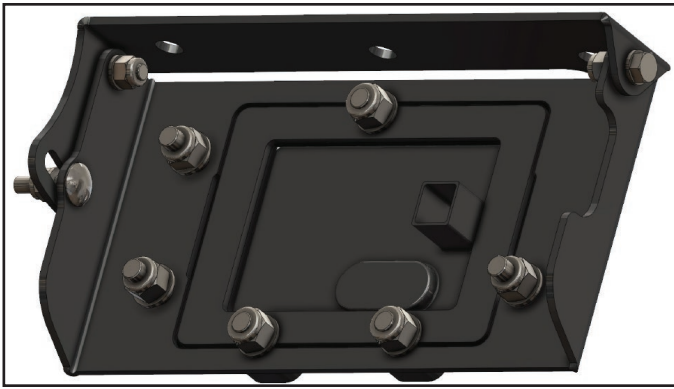


FIG. 31

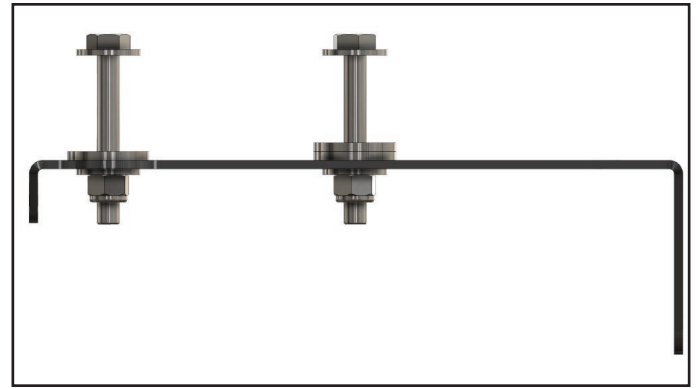


FIG. 33

27. Before mounting the ACC Relocation Bracket, route the ACC/Fog light wire harness connection through the upper left-hand corner on the radiator core. Careful not to damage the radiator when routing the wire harness.

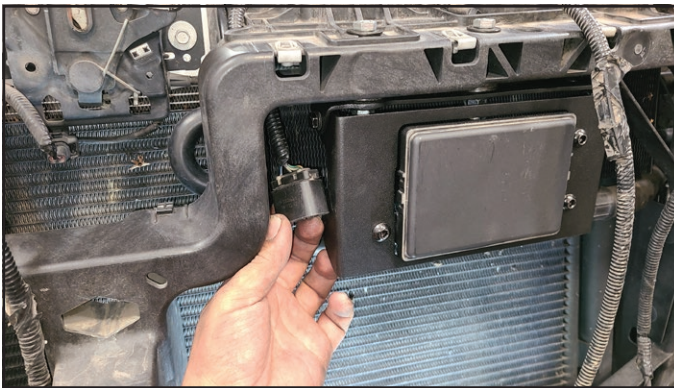


FIG. 32

28. Using a 13mm socket and wrench, use the supplied two (2) M8-1.25 X 60MM Hex Head Bolt from Step 25, and two (2) M8 X 16MM OD Flat Washer insert them through the drilled holes on top of the radiator core support. Through the bottom of the radiator core support using three (3) M8 X 28MM OD Flat Washer place one (1) to the left side and two (2) on the center holes, place the ACC Bracket assembly below the washers and secure the assembly using the supplied two (2) M8 X 16MM OD Flat Washer, and two (2) M8-1.25 Nylock Nut through the bottom of the ACC Bracket assembly.

29. Once the ACC Relocation Bracket assembly has been secured to the radiator core support, adjust the main bracket to be parallel to the grill then slightly tilt upward by a couple of degrees. At this point using a 10mm wrench, tighten the one (1) M6-1.00 X 25MM Square Neck Bolt, one (1) M6 Flat Washer, and one (1) M6-1.00 Nylock Nut.

30. VERIFY ALL FASTENERS ARE PROPERLY TORQUED BEFORE MOVING TO THE NEXT STEPS.

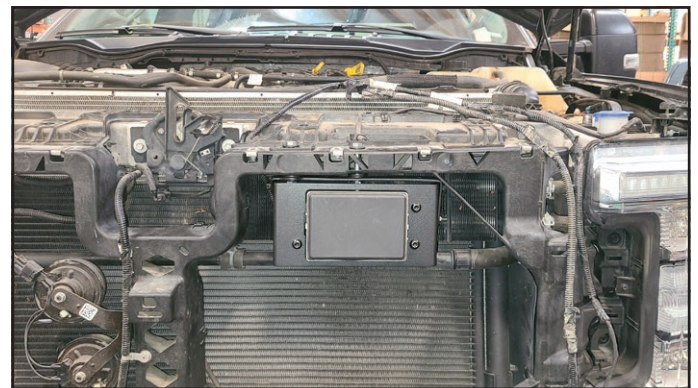


FIG. 34

31. Before placing the grill back in place, using a couple of zip ties, you may tuck or roll any extra wire from the wire harness. Ensure the extra wire is away from any moving parts inside the engine bay. If you wish to reuse the fog light wires for any light installation, please route the ends of the wire harness at this point.

32. To reinstall the grill and the air deflector cover, reference and work backwards from Step 14 through Step 12. Before reinstalling the bolts on the grill, a small portion of the plastic will have to cut to clear the installed hardware. Reference where the top of the grill covers the hardware, mark it and using a cutting tool to clear the bolt.



FIG. 35

33. If you are installing this kit in conjunction with the ICON 66200 2017-UP SUPER DUTY FRONT BUMPER, reference the installation instructions and continue with the installation.
34. Reconnect the negative battery terminal and close the hood.
35. If the Adaptive Cruise Control (ACC) is too sensitive or not sensitive enough while driving, you will have to readjust the ACC MAIN BRACKET by removing the grill and tilting the ACC up (less sensitive) or down (more sensitive).

Congratulations! Your installation is complete.

**VERIFY ALL FASTENERS ARE PROPERLY
TORQUED BEFORE DRIVING VEHICLE.**

**RETORQUE ALL NUTS, BOLTS AND LUGS AFTER
100 MILES AND PERIODICALLY THEREAFTER.**



LIMITED LIFETIME WARRANTY

ICON Vehicle Dynamics warrants to the original retail purchaser who owns the vehicle on which the product was originally installed. ICON Vehicle Dynamics does not warrant the product for finish, alterations, modifications and/or installation contrary to ICON Vehicle Dynamics instructions. ICON Vehicle Dynamics products are not designed, nor are they intended to be installed on vehicles used in race applications, for racing purposes or for similar activities. (A "race" is defined as any contest between two or more vehicles, or a contest of one or more vehicles against the clock, whether or not such contest is for a prize). This warranty does not include coverage for police or taxi vehicles, race vehicles, or vehicles used for government or commercial purposes. Also excluded from this warranty are sales outside of the United States of America and Canada.

ICON Vehicle Dynamics' obligation under this warranty is limited to the repair or replacement, at ICON Vehicle Dynamics' discretion, of the defective product. Any and all costs of removal, installation or re-installation, freight charges and incidental or consequential damages are expressly excluded from this warranty. Items that are subject to wear are not considered defective when worn and are not covered.

ICON Vehicle Dynamics components must be installed as a complete kit as shown in our current application guide. Any substitutions or exemptions of required components will immediately void the warranty. Some finish damage may happen to parts during shipping and is not covered under warranty.

This warranty is expressly in lieu of all other warranties expressed or implied. This warranty shall not apply to any product that has been improperly installed, modified or customized subject to accident, negligence, abuse or misuse.



ICON VEHICLE DYNAMICS®
PERFORMANCE SUSPENSION SYSTEMS AND SHOCK ABSORBERS

7929 Lincoln Ave. Riverside, CA 92504
Phone: 951.689.ICON Fax: 951.689.1016
www.iconvehicledynamics.com



FOLLOW US ON FACEBOOK!

