

INSTALLATION INSTRUCTIONS

2021+ FORD BRONCO REAR FACING CHASE POD



PRODUCT INCLUDES:

- Kit #46727
- *Light included

RECOMMENDED TOOLS:

- Stock Lug Nut Key
- Plastic Trim Tool
- Wire Strippers
- 19mm Socket
- 13mm Socket
- T-30 Torx
- T-25 Torx
- 3/4" Deep Socket

THANK YOU FOR PURCHASING RIGID INDUSTRIES' PRODUCTS FOR YOUR VEHICLE.

Please read through all of these Instructions and tips before proceeding with the installation. We do our best to provide a simple installation process for all applications however a professional installation is always recommended.

IMPORTANT

Always disconnect any power sources connected to your vehicle before servicing fuses or electrical systems.

STEP: 1

Remove spare tire from the tail gate carrier using the lug nut key supplied with the vehicle's wheels.



STEP: 2

Remove plastic trim from the inside of the tailgate by gently pulling on the left side to disengage the clips holding it in place. Disconnect the two wire connectors shown in the image below (top connector is for the third brake light, Bottom is for the rear camera). Remove the wiring from the vehicle by pinching the white plastic of the seal and pushing it out through the opening.



RIGID[®] INSTALLATION INSTRUCTIONS

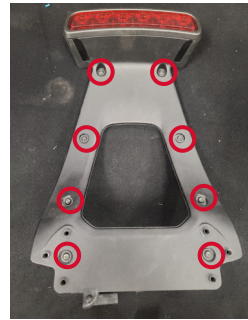
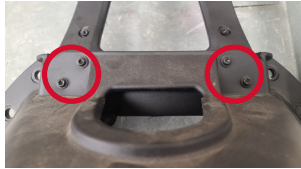
STEP: 3

Remove the (8) existing factory bolts per a side with a 13mm socket. These will be re-used to attach the tire carrier back to the vehicle after the light is installed.



STEP: 4

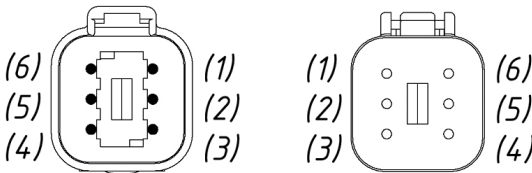
With the tire carrier removed from the vehicle, remove the (4) existing factory bolts holding the stock brake light to the carrier using a T-30 Torx. Then remove the (8) screws from the brake light assembly using a T-25 Torx. Separate the assembly and remove the wire harness by disconnecting it from the stock third brake light.



STEP: 5

Cut off factory brake light connector from wire harness and strip the ends of the two wires. Install one side of the 6-pin connector to the stock brake light wire harness and the other onto the Chase light wire ingress. Make sure to pin each connector so that the ground from the light and the stock harness are connected. Also, so that the power wire of the stock harness is connected to the white wire of the Chase lamp.

The other 4 pin locations are available should the user wish to make use of the other Chase light functions. If connecting the other Chase light functions, ensure there is appropriate fuse ratings and wire gauge. If circuit rating is less than amperage required, a relay must be installed in-line to prevent failure.



STEP: 6

Re-install tire carrier by feeding the stock wire harness back through the hole in the tailgate, securing the seal plug back into place (ensure plastic snaps into place), and re-connect the harnesses from step 2. Re-install the (8) factory bolts using the 13mm socket from step 3.

RIGID INSTALLATION INSTRUCTIONS

STEP: 7

Place spare tire back onto the carrier using the stock lug nut on the bottom and the (2) supplied extended lug nut using a ¾" deep socket for the top mounting locations.

STEP: 8

Install the Chase light onto the bracket using the supplied 6-32x1/2" socket head bolts included with the light. Install this assembly onto the remaining bracket piece using the supplied M6 hardware, do not tighten. Place assembly onto the extended lug nuts and adjust the horizontal position of the bracket assembly to allow clearance with the wheel. Tighten the M6 hardware to secure the light in place.



STEP: 9

Install light and bracket assembly onto the extended lug nuts using the supplied M12 bolt and washer and attach the 6-pin connectors.



Wiring: Wire your lights according to the instructions included with the light. Take care to avoid any heat sources and sharp or abrasive surfaces.

Your installation is now complete.
Welcome to the Rigid Nation!

WARRANTY INFORMATION

For warranty information, visit www.rigidindustries.com/about/warranty 779 N Colorado St, Gilbert, AZ 85233 • 855-760-5337
www.rigidindustries.com

RIGID, Chase, and Rigid Industries are registered and/or common law marks owned by JST Performance, LLC, a Delaware limited liability company d/b/a Rigid Industries.