



IMPORTANT WARRANTY & INSTALLATION INSTRUCTIONS ATTACHED

*Please Forward All Attached Information to Consumer
Warranty Not Valid Unless Returned to CORSA Exhaust*

We ask that you take a few moments to complete our warranty registration form:

TO ACTIVATE YOUR LIMITED LIFETIME WARRANTY GO TO:

CORSAPERFORMANCE.COM/WARRANTY



For Full-Color Installation Instructions, Please Visit:

CORSAPERFORMANCE.COM and Search by Part Number

Please be sure to review the enclosed instructions prior to beginning the installation process. If you have any questions about the enclosed parts, instructions or encounter a problem during Installation: **CALL CORSA PERFORMANCE TECHNICAL ASSISTANCE AT 800.486.0999**

Please take time to read and understand these installation instructions.

CORSA recommends that installation of this system be performed by a qualified service center or professional muffler installer who has the necessary equipment, tools and experienced personnel. However, if you decide to perform this install, the use of a hoist and an additional person will be required.

CAUTION: Never work on a hot exhaust system. Allow time for the vehicle to cool. Always wear eye protection when working under a vehicle.

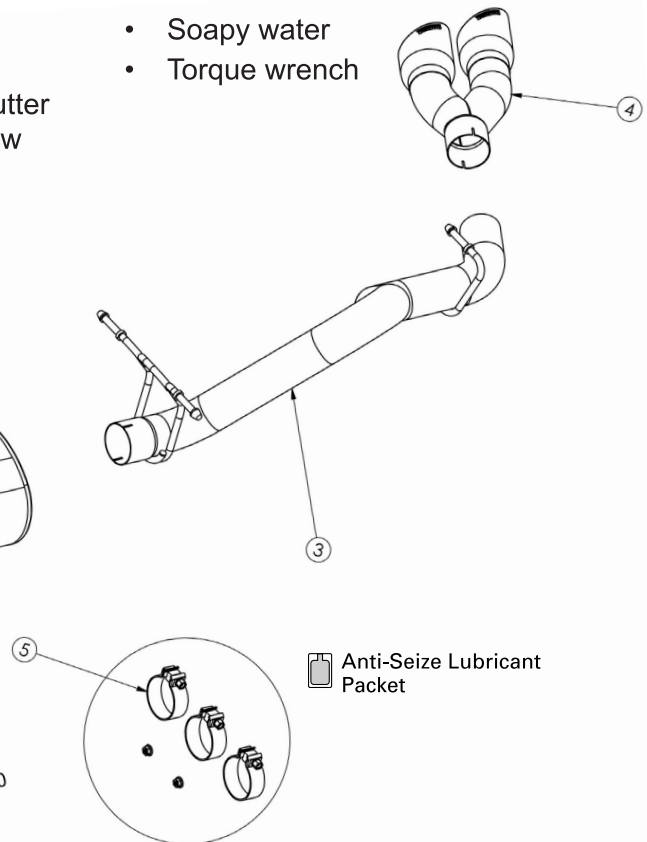
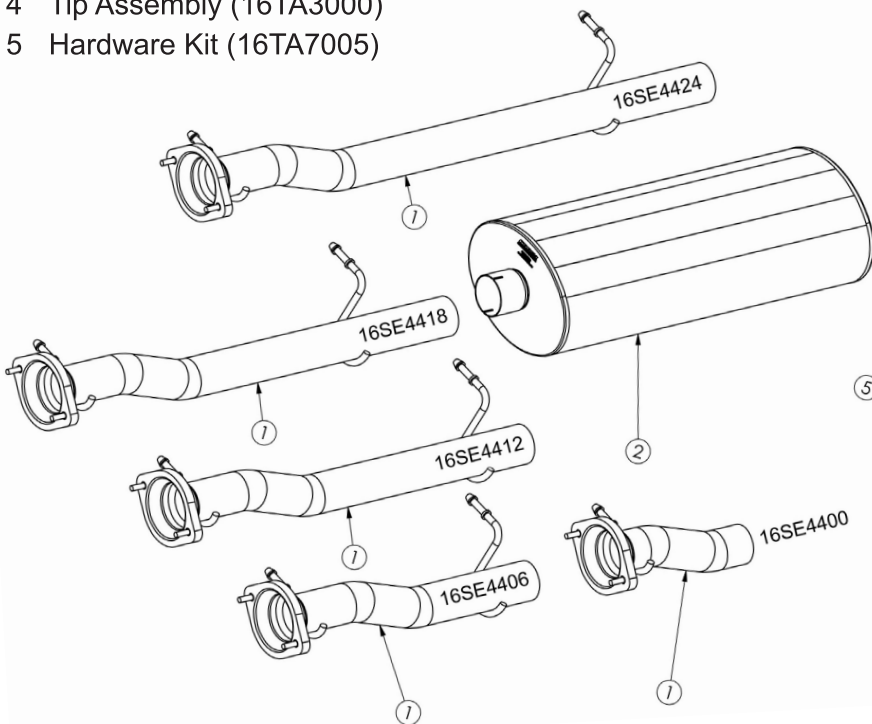
Please confirm that all parts are present before beginning the factory exhaust system removal and CORSA exhaust system installation.

Single Side Exit Bill of Materials:

- 1 Headpipe Assembly:
 16SE4400 - 133.7" WB
 16SE4406 - 144.2" WB
 16SE4412 - 153.7" WB
 16SE4418 - 158.2" WB
 16SE4424 - 167.7" WB
- 2 Muffler Assembly (16SE2027)
- 3 Tailpipe Assembly (16SE4430)
- 4 Tip Assembly (16TA3000)
- 5 Hardware Kit (16TA7005)

Recommended Tools:

- Safety Glasses
- Small flat head screw driver
- 15mm socket and ratchet
- Chain style pipe cutter or reciprocating saw
- Grommet pullers
- Spare tire removal kit
- Soapy water
- Torque wrench



Removal of Stock System:

- 1) Remove the rearmost hanger from the grommet using grommet pullers or similar device. (See Fig. A)
- 2) Use a 15mm socket and ratchet to remove the flange nuts at the flange connection of the headpipe. Then remove the hangers at the headpipe location and the hanger after the muffler. Remove the tunnel muffler section away from the vehicle. This completes the removal of the stock system. (See Fig's B, C, D & E)



Fig. A



Fig. B



Fig. C



Fig. D



Fig. E

Installation of CORSA Exhaust System:

NOTE: Apply the anti-seize lubricant (supplied) to the threads **ONLY** of all the clamps and flange bolts. Failure to follow this procedure can cause nuts to seize on clamps and potentially destroy threads. After applying anti-seize lubricant, be sure to thoroughly clean hands as lubricant will tarnish stainless steel.

NOTE: Align all clamps so that the center of the clamp bolt is 90 degrees from the notch in the pipe (See Fig. 1 to the right).

All clamps should be tightened using a properly calibrated Torque Wrench. Using an air impact gun will damage the clamp and reduce its ability to effectively seal the joint. It may also cause the joint to separate thereby causing damage to your exhaust system and your vehicle.

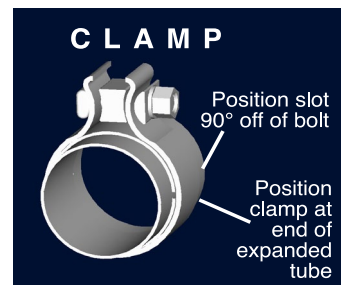


Fig. 1

- 1) Locate the CORSA Head Pipe assembly and slide the flange studs into the factory flange. Use the nuts supplied with the CORSA hardware kit and evenly tighten down to 45 Ft-lbs. Insert the hanger(s) in to the factory grommet(s). (See Fig's F, G & H) **Note:** Using a soapy solution on the grommet hole will make the job easier.



Fig. F



Fig. G



Fig. H

- Slide a supplied 3" clamp over the inlet of the CORSA muffler. Make sure the drain hole is facing down. Slide the muffler onto the Head Pipe and pre-tighten the clamp. (See Fig's I, J, K & L)



Fig. I

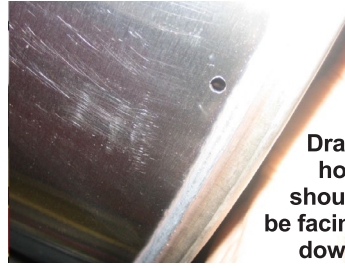


Fig. J

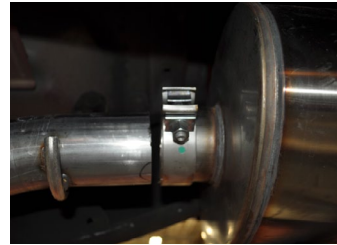


Fig. K



Fig. L

- Locate Tail Pipe and slide a supplied 3" clamp over inlet end. Then route the inlet end over the axle housing, slide over Muffler outlet (See Fig M) and snug fit clamp. The Tail Pipe hangers can now be inserted into rubber grommets (See Fig N).
- Insert Tail Pipe rear hanger into rubber insulator (See Fig O).
- Locate dual 4" Pro-Series tip assembly and slide a supplied 3" clamp over inlet. Next slide assembly over Tail Pipe (See Fig. P) and snug fit clamp.
- Check for clearance from the front of the installed exhaust system to the Tail Pipe. Once clearance adjustments are made, start tightening each 3" clamp beginning with the Intermediate Pipe clamp.
- Check alignment of tips first using a level (See Fig. Q) and be sure to allow clearance between the top of the Tip Assembly and the body panel. Make necessary adjustments, including fore and aft, and begin tightening each clamp as noted in Fig. R. Torque Setting: 45 ft.-lbs.
- It is STRONGLY SUGGESTED that all clamps be checked and tightened if necessary after road testing the vehicle and only after system has cooled.

NOTE: During cold weather start-ups, you may experience an exhaust sound that is deeper and louder in tone than usual. This is temporary and will diminish to normal levels once your engine has reached its normal operating temperature.
NOTE: Immediately following the installation of your exhaust system, you may experience a trace of smoke after initial start-up. DO NOT be alarmed. The smoke is caused by the burning of a small amount of forming oil residue used in the manufacturing process.



Fig. M



Fig. N



Fig. O



Fig. P



Fig. Q

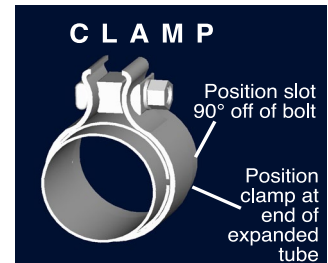


Fig. R